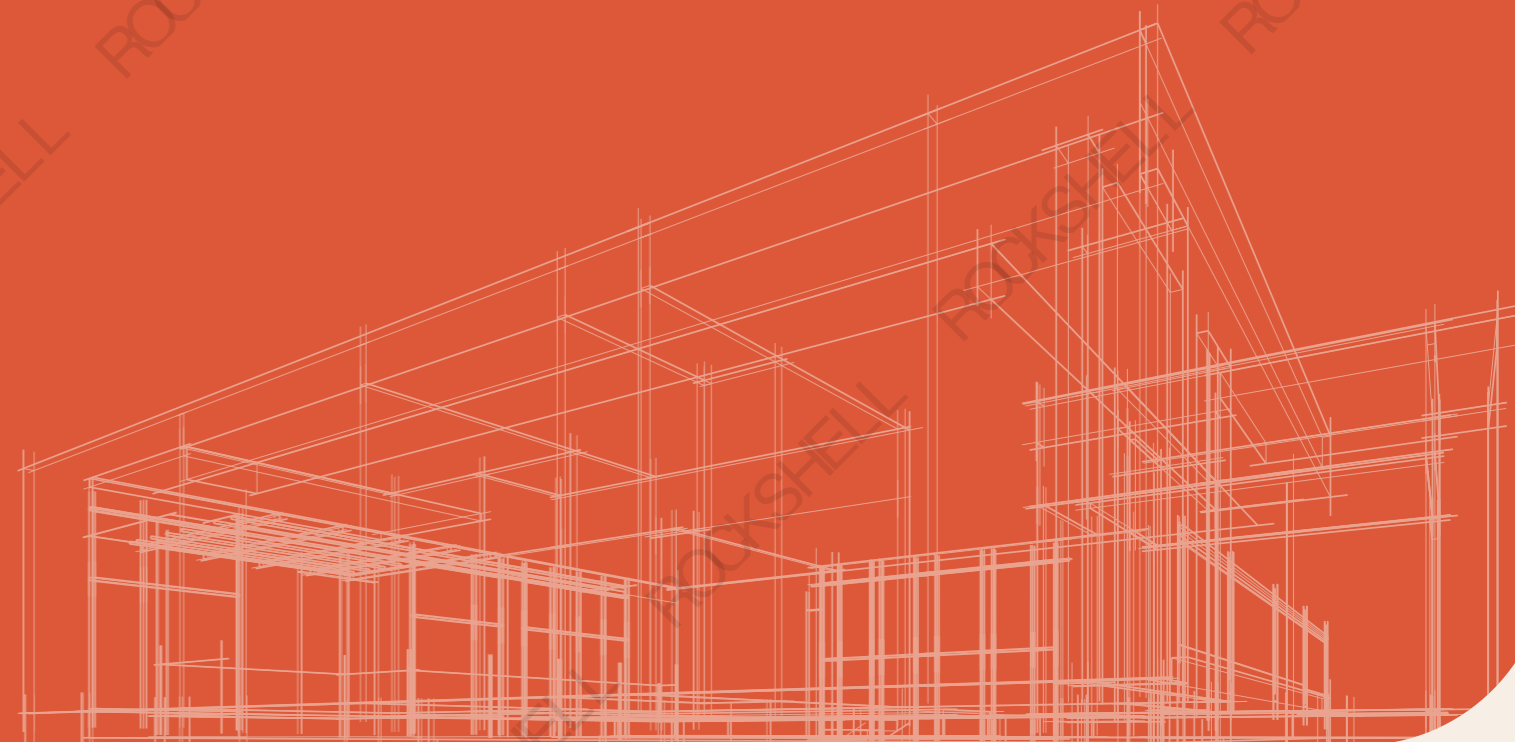
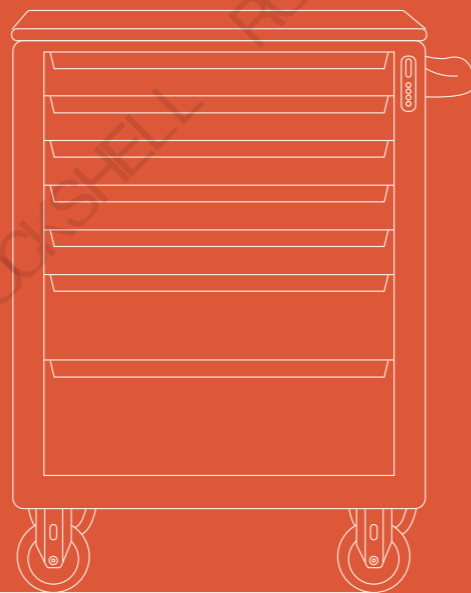


WORK SPACE PLANNING



Address: No.1 Tangxuan Road Weishi Town
Luoyang City Henan Province.

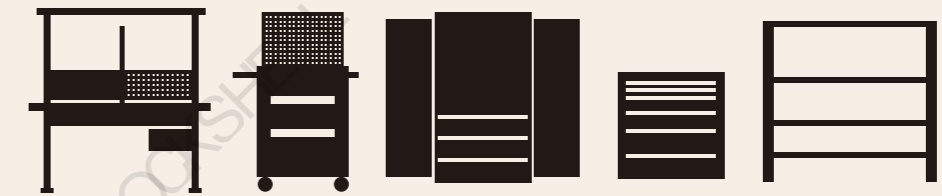
Telephone: 0379-69678887
Mobile phone: 0086 151 3999 8676
E-mail: info@rockshellcabinets.com
Websites: rockshellcabinets.com

Product Catalog

HUAJU

High-end Industrial Products Brand

Use "Technology" To Create Practical Products With Both Function And Aesthetics



HUAJU ABOUT US



15+

Focus on working space planning and storage methods for 15 years

8000+

8000 square meters of intelligent assembly line

30+

More than 30 national patent certificates

USE "TECHNOLOGY"
TO CREATE PRACTICAL
PRODUCTS
WITH BOTH FUNCTION
AND AESTHETICS



LUOYANG HUAJU INDUSTRIAL CO., LTD. IS LOCATED IN LUOYANG, THE ANCIENT CAPITAL OF THE THIRTEEN DYNASTIES. THE STYLE OF THE HAN AND WEI DYNASTIES, THE CLOUDS AND SMOKE OF THE SUI AND TANG DYNASTIES, CONDENSE THE INHERITANCE OF INGENUITY FROM GENERATION TO GENERATION. HUAJU ALSO ADHERES TO THE SPIRIT OF CRAFTSMANSHIP AND IS DETERMINED TO CREATE A CENTURY-OLD CONSCIENCE BRAND.

HUAJU INDUSTRIAL CO., LTD. HAS A TEAM OF TECHNICAL EXPERTS WITH DOMESTIC HIGH-TECH TALENTS TO COOPERATE IN RESEARCH AND DEVELOPMENT. THE CORE PRODUCTS HAVE A NUMBER OF NEW UTILITY PATENTS. THE R&D TEAM IS GOOD AT CAPTURING THE EVER-CHANGING INTERACTION BETWEEN PEOPLE AND WORKSPACES FROM THE PERSPECTIVE OF "INTELLIGENCE" AND CREATING FUNCTIONS WITH "TECHNOLOGY" PRACTICAL PRODUCTS WITH BOTH AESTHETICS AND "STABILITY AND RELIABILITY". INTEGRATE CUTTING-EDGE DESIGN INTO EVERY DETAIL, ADHERING TO THE TEAM GENE OF "EFFICIENCY, TECHNOLOGY, AND SUSTAINABILITY", FOCUSING ON CREATING CONVENIENT SPACE AND TECHNOLOGICAL INNOVATION, A STABLE AND RELIABLE INDUSTRY BENCHMARK.

HUAJU INDUSTRY IS A CROSS-REGIONAL, INTEGRATED AND INTELLIGENT HIGH-QUALITY INDUSTRIAL EQUIPMENT FOCUSING ON THE PRODUCTION, RESEARCH AND DEVELOPMENT, SALES AND SERVICE OF WAREHOUSING AND LOGISTICS EQUIPMENT, STATION EQUIPMENT, STORAGE AND TRANSFER EQUIPMENT, TRANSPORTATION TOOLS, LOGISTICS EQUIPMENT AND LABORATORY FURNITURE. INTELLIGENT MANUFACTURING ENTERPRISES, MAINLY ENGAGED IN HIGH-QUALITY STANDARDIZED PRODUCTS SUCH AS FITTER BENCHES, TEST BENCHES, LOCKERS, TOOL CABINET CARTS, STORAGE RACKS, INTELLIGENT STORAGE CABINETS FOR KNIVES, AND SPACE WORKSTATIONS. IT ALSO HAS NON-STANDARD CUSTOMIZATION TO MEET THE DIFFERENT NEEDS OF CUSTOMERS. AND IS COMMITTED TO BECOMING THE NUMBER ONE HIGH-END INDUSTRIAL PRODUCTS IN CHINA. BRAND CONTINUOUS INNOVATION. LEADING THE TECHNOLOGICAL DEVELOPMENT OF THE INDUSTRY.

HUAJU GLOBAL MARKETING NETWORK

FOCUSING ON HIGH-QUALITY SOLUTIONS FOR WORK SPACE PLANNING AND STORAGE METHODS, HUAJU CONTINUES TO DEVELOP, MANUFACTURE AND SELL, FORMING A GLOBAL MARKETING STRATEGY CENTERED ON LUOYANG AND RADIATING TO THE WORLD. IT IS THE FIRST IN THE INDUSTRY TO ACHIEVE A NATIONAL LAYOUT, WITH CUSTOMERS ALL OVER THE WORLD. THE BRAND INFLUENCE OF THE COMPANY GRADUALLY GOES OUT OF CHINA AND GOES TO THE WORLD, AND ITS COMPREHENSIVE STRENGTH MAINTAINS ITS LEADING POSITION IN THE INDUSTRY.

SINCE ITS ESTABLISHMENT, HUAJU HAS BEEN CUSTOMER-CENTRIC AND HAS CONTINUED TO CREATE SYSTEM SOLUTIONS THAT EXCEED VALUE FOR CUSTOMERS. MEET THE NATIONAL STANDARD.



Business Coverage

Asia Pacific, Middle East, Africa & America with over

200

Service Locations

Business partner



COMBINATION WORKBENCH



COMBINATION WORKBENCH

Multi-function hanging board



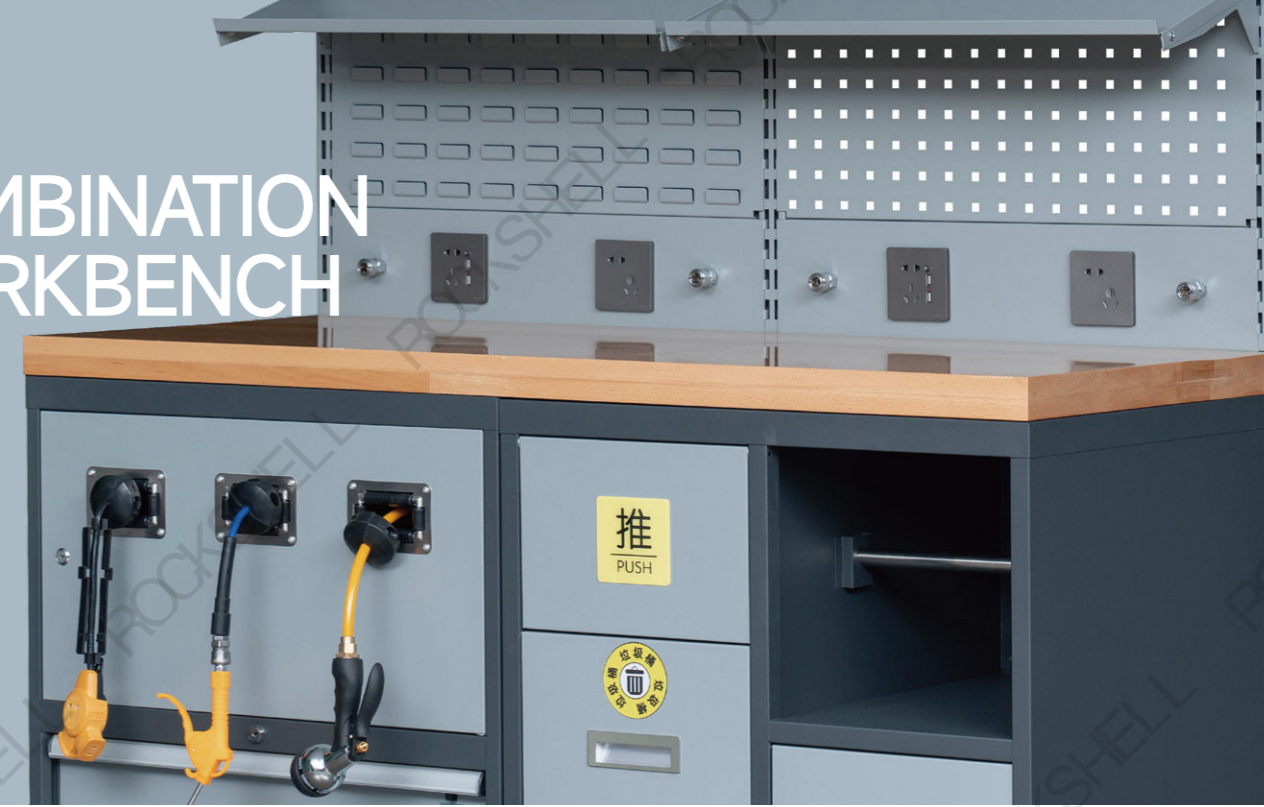
Custom desktop



Add light source



COMBINATION WORKBENCH



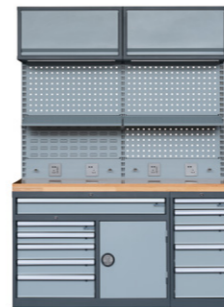
Combination Workbench
W1436*D600*H800/2000MM



Combination Workbench
W2154*D600*H800/2000MM



Combination Workbench
W1436+1023*D600*H800/2000MM



Combination Workbench
W1436*D600*H800/2000MM



Combination Workbench
W1436*D600*H800/2000MM




Combination Workbench
W850*D850*H800/2000MM

ANTI-STATIC WORKBENCH



ANTI-STATIC WORKBENCH

Anti static test report				
		Report number: 18-5648		
Serial number	Test item	Test basis and requirements	Experimental result	Conclusion
1	Volume resistance	SJ/T 11236-2001 1.0X10 ⁵ -1.0x10 ⁸ Ω	3.24X10 ⁷ Ω	Qualified
2	Point to point resistance	SJ/T 11236-2001 1.0X10 ⁵ -1.0x10 ⁹ Ω	6.34X10 ⁷ Ω	Qualified
3	Surface wear-resistant	SJ/T 11236-2001 Normal : ≥400r High : ≥1000r Super : ≥3000r	3120r	Qualified
4	Combustion performance	SJ/T 11236-2001 FV-1 Class1 (≤30S)	29.70S FV-1 Class1	Qualified
5	Tensile strength	SJ/T 11236-2001 ≥60Mpa	70.86Mpa	Qualified

PROFESSIONAL ANTI-STATIC WORKBENCH

Lifting range

670mm-1050mm



Adjustable light board



Hanging tiltable shed panel



Anti-static Workbench

HF15-A0010(W1500*D750*H760-1050)
HF18-A0010(W1800*D750*H760-1050)



Anti-static Workbench

HF15-A009(W1500*D750*H760-1050)
HF18-A009(W1800*D750*H760-1050)



Anti-static Workbench

HF15-A0011(W1500*D750*H760-1050)
HF18-A0011(W1800*D750*H760-1050)



Anti-static Workbench

HF15-A003(W1500*D750*H760-1050)
HF18-A003(W1800*D750*H760-1050)



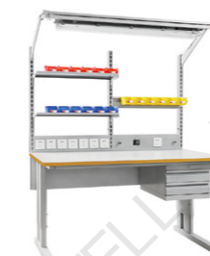
Anti-static Workbench

HF15-A004(W1500*D750*H760-1050)
HF18-A004(W1800*D750*H760-1050)



Anti-static Workbench

HF15-A005(W1500*D750*H760-1050)
HF18-A005(W1800*D750*H760-1050)



Anti-static Workbench

HF15-A006(W1500*D750*H760-1050)
HF18-A006(W1800*D750*H760-1050)



Anti-static Workbench

HF15-A007(W1500*D750*H760-1050)
HF18-A007(W1800*D750*H760-1050)



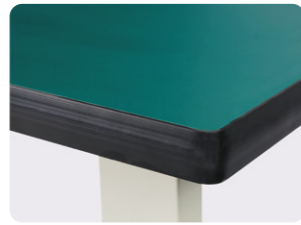
Anti-static Workbench

HF15-A008(W1500*D750*H760-1050)
HF18-A008(W1800*D750*H760-1050)

CONVENTIONAL WORKBENCH



CONVENTIONAL WORKBENCH



Composite Countertop

Features: acid and alkali resistance, wear and oil resistance, impact resistance



Beech countertop

Features: high strength, high load bearing, can be installed pliers



Fireproof board countertop

Features: fireproof, wear-resistant



Anti-static countertop

Features: high flatness, vibration absorption, impact resistance



Steel countertop

Features: high temperature resistance, wear resistance, acid corrosion resistance



Stainless steel countertop

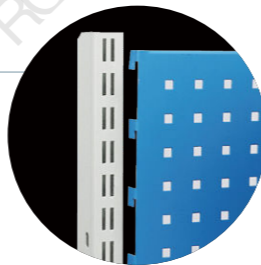
Features: acid and alkali resistance, high strength, dustproof and anti-corrosion



Multifunctional panel



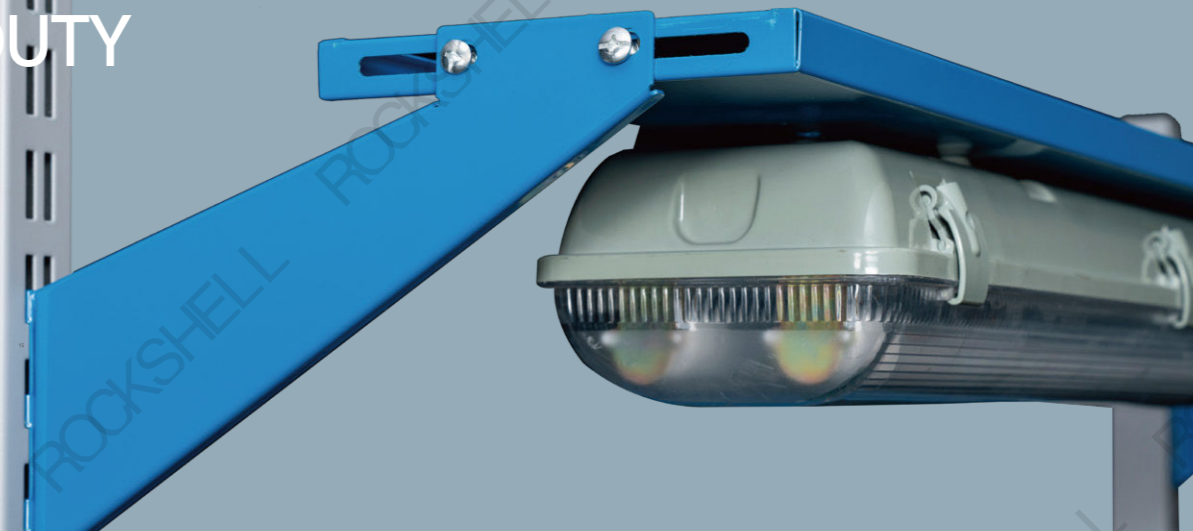
Hanging panel



Heavy duty bench

HS12-7F010(W1200*D750*H800+920)
HS15-7F010(W1500*D750*H800+920)
HS18-7F010(W1800*D750*H800+920)
HS21-7F010(W2100*D750*H800+920)

HEAVY DUTY BENCH



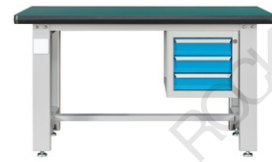
Heavy duty bench

HS12-6G001(W1200*D600*H800)
HS12-7G001(W1200*D750*H800)
HS15-7G001(W1500*D750*H800)
HS18-7G001(W1800*D750*H800)
HS21-7G001(W2100*D750*H800)



Heavy duty bench

HS12-7F002(W1200*D750*H800)
HS15-7F002(W1500*D750*H800)
HS18-7F002(W1800*D750*H800)
HS21-7F002(W2100*D750*H800)



Heavy duty bench

HS12-7F005(W1200*D750*H800)
HS15-7F005(W1500*D750*H800)
HS18-7F005(W1800*D750*H800)
HS21-7F005(W2100*D750*H800)



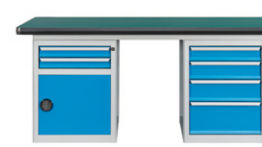
Heavy duty bench

HS12-7F003(W1200*D750*H800)
HS15-7F003(W1500*D750*H800)
HS18-7F003(W1800*D750*H800)
HS21-7F003(W2100*D750*H800)



Heavy duty bench

HS12-7F006(W1200*D750*H800)
HS15-7F006(W1500*D750*H800)
HS18-7F006(W1800*D750*H800)
HS21-7F006(W2100*D750*H800)



Heavy duty bench

HS15-7F017(W1500*D750*H800)
HS18-7F017(W1800*D750*H800)
HS21-7F017(W2100*D750*H800)



Heavy duty bench

HS12-7F009(W1200*D750*H800+920)
HS15-7F009(W1500*D750*H800+920)
HS18-7F009(W1800*D750*H800+920)
HS21-7F009(W2100*D750*H800+920)



Heavy duty bench

HS12-7F018(W1200*D750*H800+920)
HS15-7F018(W1500*D750*H800+920)
HS18-7F018(W1800*D750*H800+920)
HS21-7F018(W2100*D750*H800+920)



Heavy duty bench

HS12-7F019(W1200*D750*H800+920)
HS15-7F019(W1500*D750*H800+920)
HS18-7F019(W1800*D750*H800+920)
HS21-7F019(W2100*D750*H800+920)

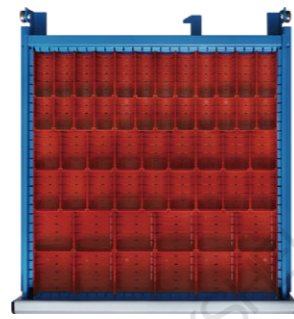
TOOL CABINET



TOOL CABINET



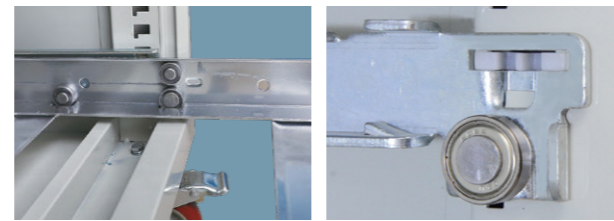
Partition plate



Classification groove

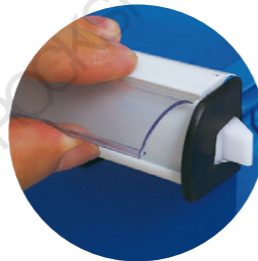


Classification box

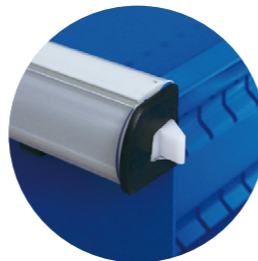


Single and double rail optional, using 3mm high-strength steel, single track bearing 100kg, double track bearing 150kg

ABS transparent label groove



Safety clasp device



Heavy duty tool cabinet HA-004
Cabinet size: W565*D572*H700 mm
Drawer configuration: 150EA,200EA,250EA
Guide rail configuration: Single and double rails are optional
Load: 100kg per drawer (150kg double rail)



Heavy duty tool cabinet HA-005
Cabinet size: W565*D572*H700 mm
Drawer configuration: 75EA;125EA;150EA;250EA
Guide rail configuration: Single and double rails are optional
Load: 100kg per drawer (150kg double rail)



Heavy duty tool cabinet HA-006
Cabinet size: W565*D572*H700 mm
Drawer configuration: 75EA;100EA;100EA;125EA;200EA
Guide rail configuration: Single and double rails are optional
Load: 100kg per drawer (150kg double rail)



Heavy duty tool cabinet HA-007
Cabinet size: W718*D572*H700 mm
Drawer configuration: 150EA;200EA;250EA
Guide rail configuration: Single and double rails are optional
Load: 100kg per drawer (150kg double rail)



Heavy duty tool cabinet HA-008
Cabinet size: W718*D572*H850 mm
Drawer configuration: 75EA;125EA;150EA;150EA;250EA
Guide rail configuration: Single and double rails are optional
Load: 100kg per drawer (150kg double rail)



Heavy duty tool cabinet HA-009
Cabinet size: W718*D572*H1000 mm
Drawer configuration: 75EA;100EA;100EA;125EA;200EA;300EA
Guide rail configuration: Single and double rails are optional
Load: 100kg per drawer (150kg double rail)



Heavy duty tool cabinet HA-010
Cabinet size: W871*D572*H700 mm
Drawer configuration: 75EA;125EA;150EA;250EA
Guide rail configuration: Single and double rails are optional
Load: 100kg per drawer (150kg double rail)



Heavy duty tool cabinet HA-011
Cabinet size: W871*D572*H850 mm
Drawer configuration: 75EA;125EA;150EA;150EA;250EA
Guide rail configuration: Single and double rails are optional
Load: 100kg per drawer (150kg double rail)



Heavy duty tool cabinet HA-012
Cabinet size: W871*D572*H1000 mm
Drawer configuration: 75EA;100EA;100EA;125EA;200EA;300EA
Guide rail configuration: Single and double rails are optional
Load: 100kg per drawer (150kg double rail)



Heavy duty tool cabinet HA-013
Cabinet size: W1023*D572*H700 mm
Drawer configuration: 75EA;125EA;150EA;250EA
Guide rail configuration: Single and double rails are optional
Load: 100kg per drawer (150kg double rail)



Heavy duty tool cabinet HA-014
Cabinet size: W1023*D572*H850 mm
Drawer configuration: 75EA;125EA;150EA;150EA;250EA
Guide rail configuration: Single and double rails are optional
Load: 100kg per drawer (150kg double rail)



Heavy duty tool cabinet HA-015
Cabinet size: W1023*D572*H1000 mm
Drawer configuration: 75EA;100EA;100EA;125EA;200EA;300EA
Guide rail configuration: Single and double rails are optional
Load: 100kg per drawer (150kg double rail)



TOOL CART



TOOL CART

Free combination



Security combination lock



Rivet reinforcement



NEW TYPE TOOL CART



Tool cart SC-003

Specifications: W710*D485*H988MM
 Drawer configuration: 100;125;150;150;200
 Guide rail configuration: Ultra-quiet three-section track
 Load capacity: Each drawer carries 45-60kg



Tool cart SC-006

Specifications: W710*D485*H988+450MM
 Drawer configuration: 75;75;100;125;150;200
 Guide rail configuration: Ultra-quiet three-section track
 Load capacity: Each drawer carries 45-60kg



Tool cart SC-001

Specifications: W710*D485*H988MM
 Drawer configuration: 75;75;75;75;150;200
 Guide rail configuration: Ultra-quiet three-section track
 Load capacity: Each drawer carries 45-60kg

STORAGE EXPERT

Tool cart SC-001

Specifications: W710*D485*H988+450MM
 Drawer configuration: 75;75;75;75;150;200
 Guide rail configuration: Ultra-quiet three-section track
 Load capacity: Each drawer carries 45-60kg



Tool cart SC-002

Specifications: W710*D485*H988+450MM
 Drawer configuration: 75;75
 Guide rail configuration: Ultra-quiet three-section track
 Load capacity: Each drawer carries 45-60kg



Tool cart SC-005

Specifications: W710*D485*H988+450MM
 Drawer configuration: 75;75;75
 Guide rail configuration: Ultra-quiet three-section track
 Load capacity: Each drawer carries 45-60kg



Tool cart SC-007

Specifications: W1023*D480*H988+450MM
 Drawer configuration: 75;75;75;75;150;200
 Guide rail configuration: Ultra-quiet three-section track
 Load capacity: Each drawer carries 45-60kg

TOOL CART



Heavy tool cart HB-001
 Cart size: W412*D572*H850 mm
 Drawer configuration:
 150EA;200EA;250EA
 Guide rail configuration:
 Single and double rails are optional
 Load: 100kg per drawer (150kg double rail)



Heavy tool cart HB-002
 Cart size: W412*D572*H850 mm
 Drawer configuration:
 75EA;125EA;150EA;250EA
 Guide rail configuration:
 Single and double rails are optional
 Load: 100kg per drawer (150kg double rail)



Heavy tool cart HB-003
 Cart size: W412*D572*H850 mm
 Drawer configuration:
 75EA;100EA;125EA;200EA;300EA
 Guide rail configuration:
 Single and double rails are optional
 Load: 100kg per drawer (150kg double rail)



Heavy tool cart HB-004
 Cart size: W565*D572*H850 mm
 Drawer configuration:
 150EA;200EA;250EA
 Guide rail configuration:
 Single and double rails are optional
 Load: 100kg per drawer (150kg double rail)



Heavy tool cart HB-005
 Cart size: W565*D572*H850 mm
 Drawer configuration:
 75EA;125EA;150EA;250EA
 Guide rail configuration:
 Single and double rails are optional
 Load: 100kg per drawer (150kg double rail)



Heavy tool cart HB-006
 Cart size: W565*D572*H850 mm
 Drawer configuration:
 75EA;100EA;100EA;125EA;200EA
 Guide rail configuration:
 Single and double rails are optional
 Load: 100kg per drawer (150kg double rail)

HEAVY TOOL CART



Heavy tool cart HB-007
 Cart size: W718*D572*H850 mm
 Drawer configuration:
 75EA;125EA;150EA;250EA
 Guide rail configuration:
 Single and double rails are optional
 Load: 100kg per drawer (150kg double rail)



Heavy tool cart HB-008
 Cart size: W718*D572*H1000 mm
 Drawer configuration:
 75EA;125EA;150EA;150EA;250EA
 Guide rail configuration:
 Single and double rails are optional
 Load: 100kg per drawer (150kg double rail)



Heavy tool cart HB-009
 Cart size: W718*D572*H1150 mm
 Drawer configuration:
 75EA;100EA;100EA;125EA;200EA;300EA
 Guide rail configuration:
 Single and double rails are optional
 Load: 100kg per drawer (150kg double rail)



Heavy tool cart HB-010
 Cart size: W871*D572*H850 mm
 Drawer configuration:
 75EA;125EA;150EA;250EA
 Guide rail configuration:
 Single and double rails are optional
 Load: 100kg per drawer (150kg double rail)



Heavy tool cart HB-011
 Cart size: W871*D572*H1000 mm
 Drawer configuration:
 75EA;125EA;150EA;150EA;250EA
 Guide rail configuration:
 Single and double rails are optional
 Load: 100kg per drawer (150kg double rail)



Heavy tool cart HB-012
 Cart size: W871*D572*H1150 mm
 Drawer configuration:
 75EA;100EA;100EA;125EA;200EA;300EA
 Guide rail configuration:
 Single and double rails are optional
 Load: 100kg per drawer (150kg double rail)



Wheel bottom plate



Anti-fall clip



Heavy tool cart HB-017
 Cart size: W1000*D500*H850 mm
 Drawer configuration:
 75EA;125EA;150EA;250EA
 Guide rail configuration:
 Heavy single rails
 Load: 100kg per drawer



Heavy tool cart HB-019
 Cart size: W1000*D500*H850 mm
 Drawer configuration:
 75EA;100EA;100EA;125EA;200EA
 Guide rail configuration:
 Heavy single rails
 Load: 100kg per drawer



Heavy tool cart HB-018
 Cart size: W1023*D572*H1150 mm
 Drawer configuration:
 125EA;75EA;75EA;100EA;125EA;150EA
 Guide rail configuration:
 Heavy single rails
 Load: 100kg per drawer

TOOL CART

The whole cart is equipped with high precision embedded riveted nuts



High elastic silence 3 inches



TPR casters



STORAGE EXPERT

Light tool cart HJ31211Y

W700*D420*H820	
Drawer	1 /Group
Side	2 /Piece
Back	1 /Piece
Tool box	1 /One



Light tool cart HJ30000Y

Drawer	0 /Group
Side	0 /Piece
Back	0 /Piece
Tool box	0 /One



Light tool cart HJ30201Y

Drawer	0 /Group
Side	2 /Piece
Back	0 /Piece
Tool box	1 /One



Light tool cart HJ30210Y

Drawer	0 /Group
Side	2 /Piece
Back	1 /Piece
Tool box	0 /One



Light tool cart HJ31211Y

Drawer	1 /Group
Side	2 /Piece
Back	1 /Piece
Tool box	1 /One



Light tool cart HJ30000S

Drawer	0 /Group
Side	0 /Piece
Back	0 /Piece
Tool box	0 /One



Light tool cart HJ30201S

Drawer	0 /Group
Side	2 /Piece
Back	0 /Piece
Tool box	1 /One



Light tool cart HJ30210S

Drawer	0 /Group
Side	2 /Piece
Back	1 /Piece
Tool box	0 /One



Light tool cart HJ30211S

Drawer	0 /Group
Side	2 /Piece
Back	1 /Piece
Tool box	1 /One



Light tool cart HJ30000E

Drawer	0 /Group
Side	0 /Piece
Back	0 /Piece
Tool box	0 /One



Light tool cart HJ30201E

Drawer	0 /Group
Side	2 /Piece
Back	0 /Piece
Tool box	1 /One



Light tool cart HJ30210E

Drawer	0 /Group
Side	2 /Piece
Back	1 /Piece
Tool box	0 /One



Light tool cart HJ30211E

Drawer	0 /Group
Side	2 /Piece
Back	1 /Piece
Tool box	1 /One



Light tool cart HJ30000R

Drawer	0 /Group
Side	0 /Piece
Back	0 /Piece
Tool box	0 /One



Light tool cart HJ31201R

Drawer	1 /Group
Side	2 /Piece
Back	0 /Piece
Tool box	1 /One



Light tool cart HJ30210R

Drawer	0 /Group
Side	2 /Piece
Back	1 /Piece
Tool box	0 /One

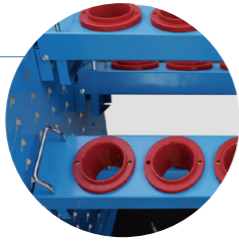


Light tool cart HJ30211R

Drawer	0 /Group
Side	2 /Piece
Back	1 /Piece
Tool box	1 /One

HEAVY TOOL CART

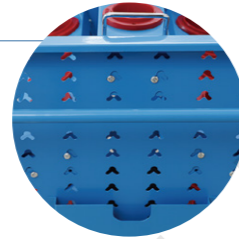
Herringbone hanging hole



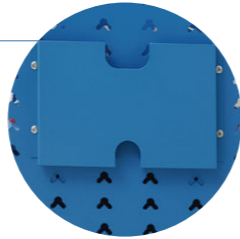
Tool holder handle



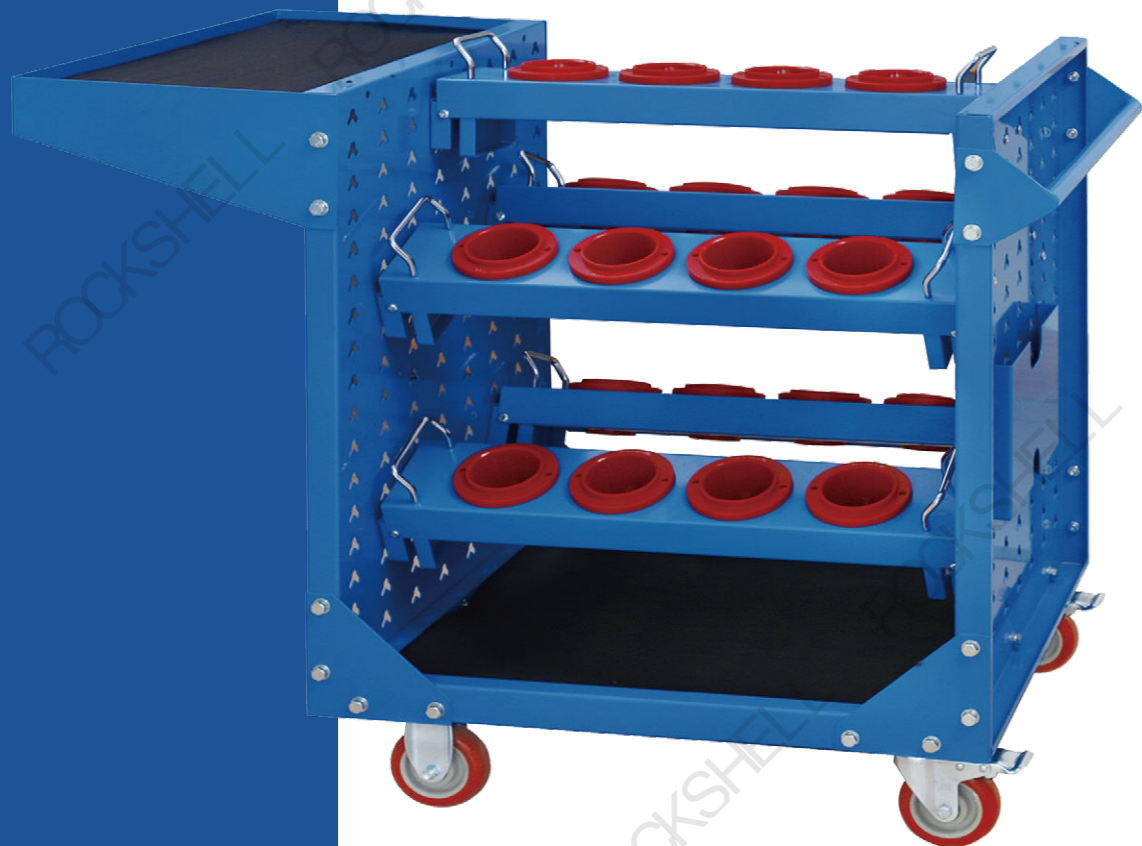
Cart holder handle



File slot

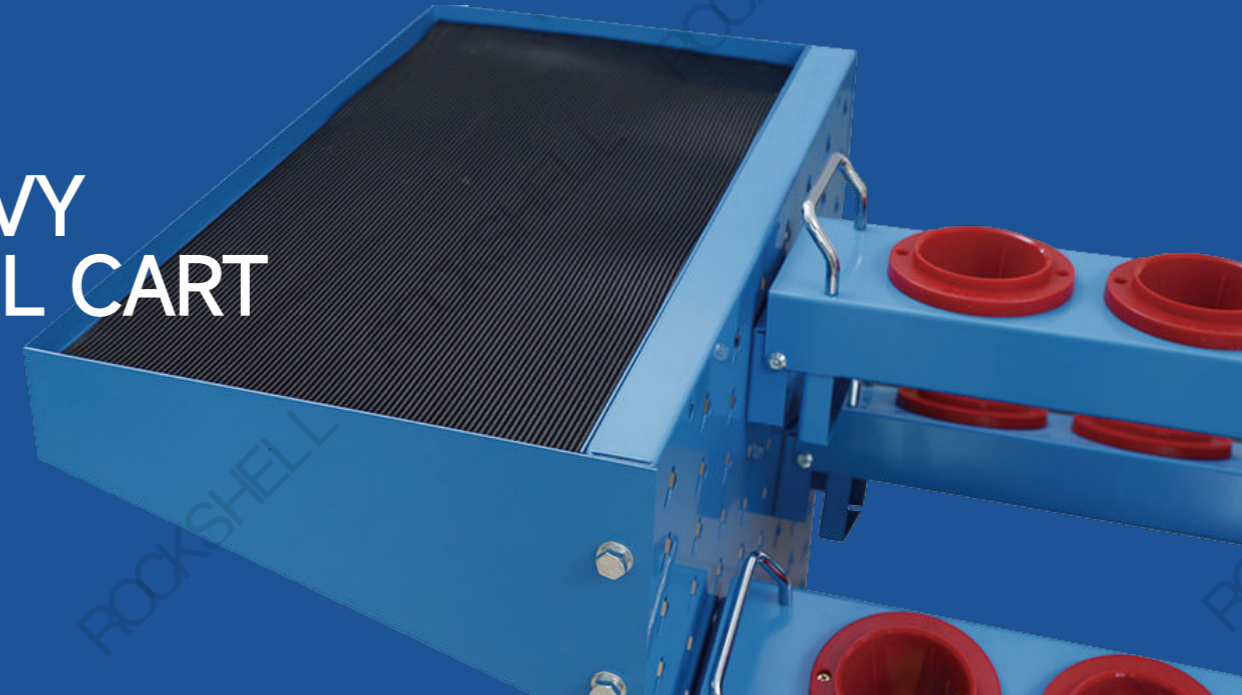


Polyurethane casters



HC-001
W1060*D600*H880

HEAVY TOOL CART



HC-002
W565*D572*H1290



Top tool plate



Tool drawer

Tool set introduction

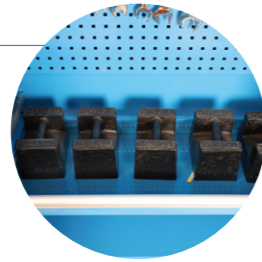
Model	Dimensions (mm)					Model	Dimensions (mm)				
	A	B	C	D	E		A	B	C	D	E
BT30	65	33	29	23	35	HSK63	64	54	48	35	87
BT40	82	47	38	32	55	HSK80	104	81	66	60	35
BT50	108	72	59	53	69	HSK100	124	101	82	76	35

LOCKER



LOCKER

Single rail drawer



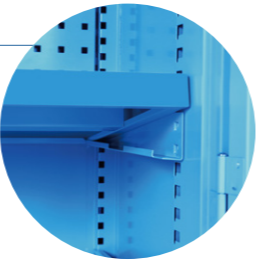
Heavy rail design



Adjustable foot



Pallet type laminate



STORAGE EXPERT

Heavy duty locker HD-B2382

Size: W1023*D500*H1800mm
Single drawer bearing 100kg laminates bearing 100kg

Set including:

Laminate	2 /Floor
Drawer	3 /Floor
Suspension board	8 /Piece
Suspension board	2 /Piece

HEAVY DUTY LOCKER



Heavy duty locker HD-B4000

Size: W1023*D500*H1800mm
Single drawer bearing 100kg laminates bearing 100kg

Set including:

Laminate	4 /Floor
Drawer	0 /Floor
Suspension board	0 /Piece
Suspension board	0 /Piece



Heavy duty locker HD-B6000

Size: W1023*D500*H1800mm
Single drawer bearing 100kg laminates bearing 100kg

Set including:

Laminate	6 /Floor
Drawer	0 /Floor
Suspension board	0 /Piece
Suspension board	0 /Piece

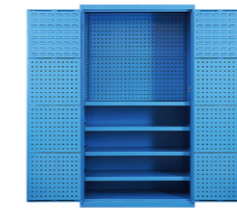


Heavy duty locker HD-B8000

Size: W1023*D500*H1800mm
Single drawer bearing 100kg laminates bearing 100kg

Set including:

Laminate	8 /Floor
Drawer	0 /Floor
Suspension board	0 /Piece
Suspension board	0 /Piece

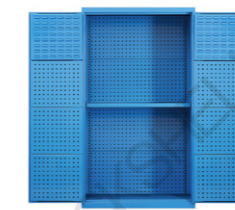


Heavy duty locker HD-B4082

Size: W1023*D500*H1800mm
Single drawer bearing 100kg laminates bearing 100kg

Set including:

Laminate	4 /Floor
Drawer	0 /Floor
Suspension board	8 /Piece
Suspension board	2 /Piece



Heavy duty locker HD-B1084

Size: W1023*D500*H1800mm
Single drawer bearing 100kg laminates bearing 100kg

Set including:

Laminate	1 /Floor
Drawer	0 /Floor
Suspension board	4 /Piece
Suspension board	8 /Piece



Heavy duty locker HD-B2102

Size: W1023*D500*H1800mm
Single drawer bearing 100kg laminates bearing 100kg

Set including:

Laminate	2 /Floor
Drawer	1 /Floor
Suspension board	0 /Piece
Suspension board	2 /Piece



Heavy duty locker HD-B2202

Size: W1023*D500*H1800mm
Single drawer bearing 100kg laminates bearing 100kg

Set including:

Laminate	2 /Floor
Drawer	2 /Floor
Suspension board	0 /Piece
Suspension board	2 /Piece



Heavy duty locker HD-B2282

Size: W1023*D500*H1800mm
Single drawer bearing 100kg laminates bearing 100kg

Set including:

Laminate	2 /Floor
Drawer	2 /Floor
Suspension board	8 /Piece
Suspension board	2 /Piece



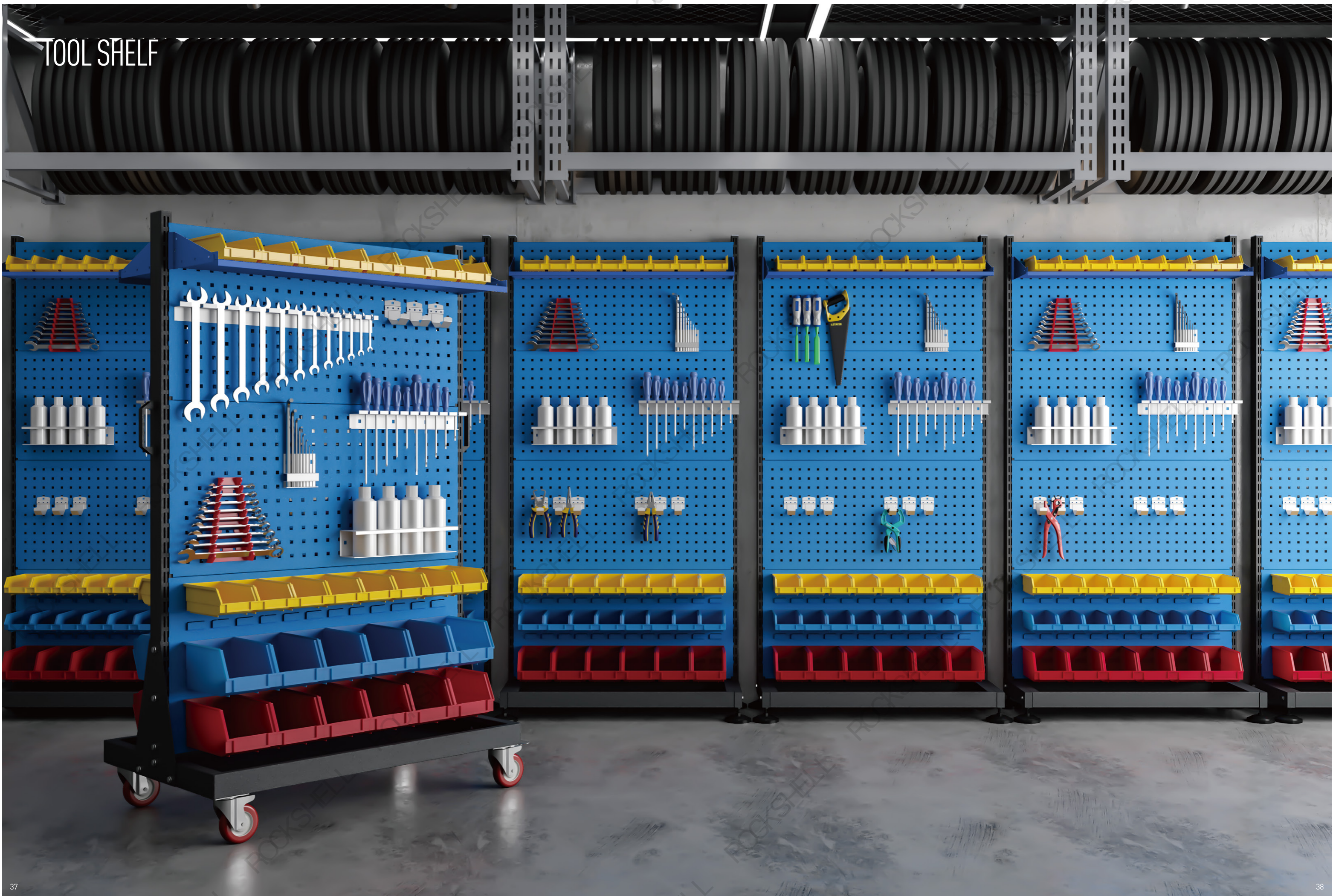
Heavy duty locker HD-B2302

Size: W1023*D500*H1800mm
Single drawer bearing 100kg laminates bearing 100kg

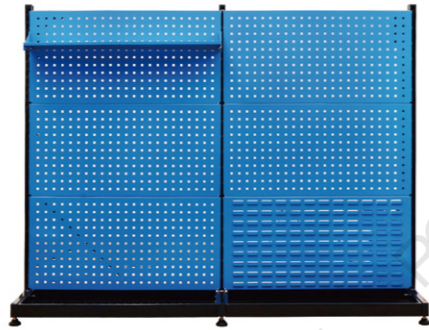
Set including:

Laminate	2 /Floor
Drawer	3 /Floor
Suspension board	0 /Piece
Suspension board	2 /Piece

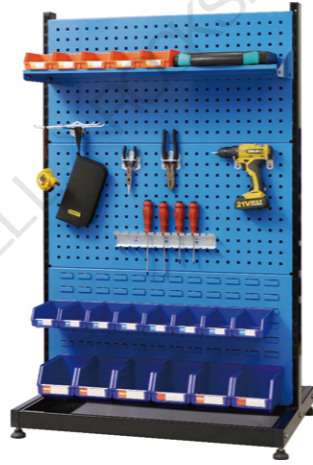
TOOL SHELF



TOOL SHELF

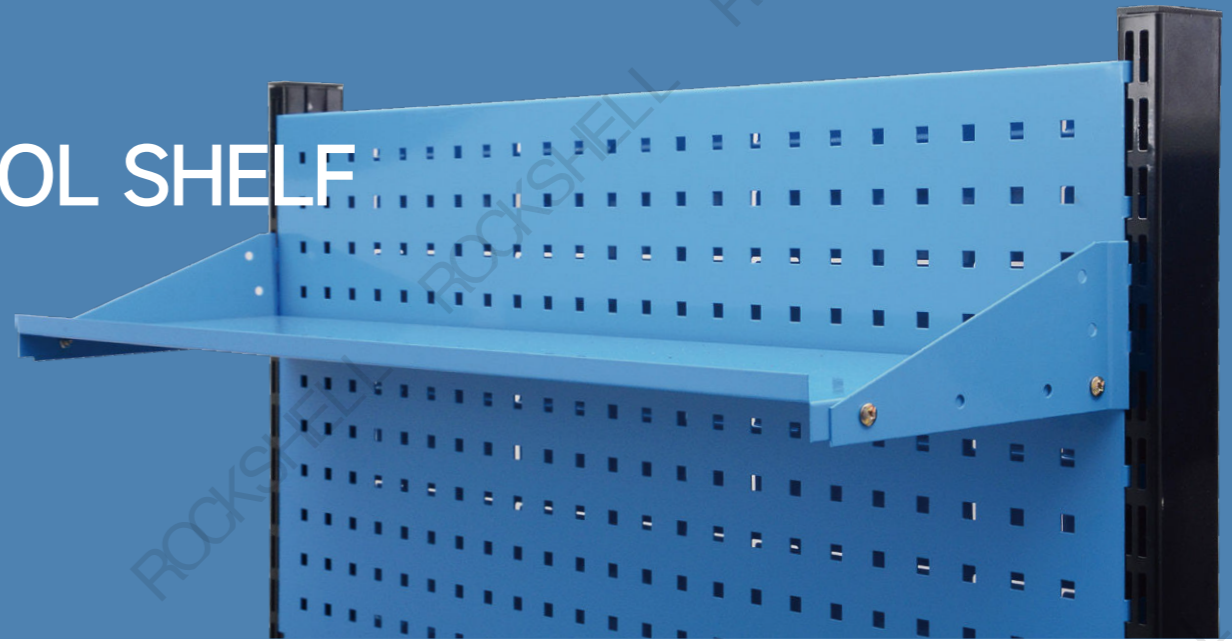


HE1L-2301
 Size: W960*930*D375*H1450mm
 Louver 1 /Piece
 Louver 5 /Piece

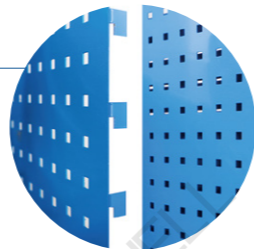


HE2R-301
 Size: W960*D610*H1450mm
 Louver 2 /Piece
 Louver 4 /Piece

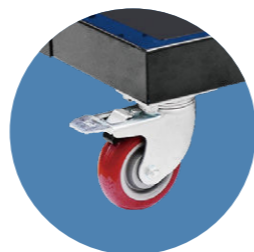
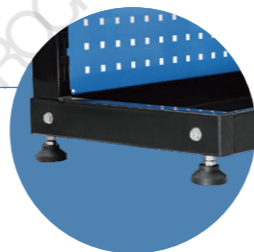
TOOL SHELF



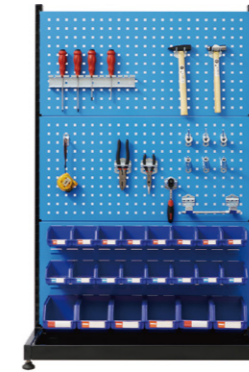
Hanging plate technology



Fixed foot and moving wheels



HE1R-201
 Size: W960*D375*H990mm
 Louver 1 /Piece
 Louver 1 /Piece



HE1R-301
 Size: W960*D375*H1450mm
 Louver 1 /Piece
 Louver 2 /Piece



HE1R-401
 Size: W960*D375*H1910mm
 Louver 1 /Piece
 Louver 3 /Piece



HE2M-201
 Size: W960*D610*H1110mm
 Louver 2 /Piece
 Louver 2 /Piece



HE2M-301
 Size: W960*D610*H1560mm
 Louver 2 /Piece
 Louver 4 /Piece



HE2M-302
 Size: W960*D610*H1560mm
 Louver 6 /Piece
 Louver 0 /Piece

SHELF

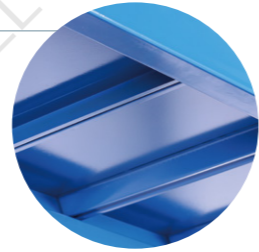


SHELF

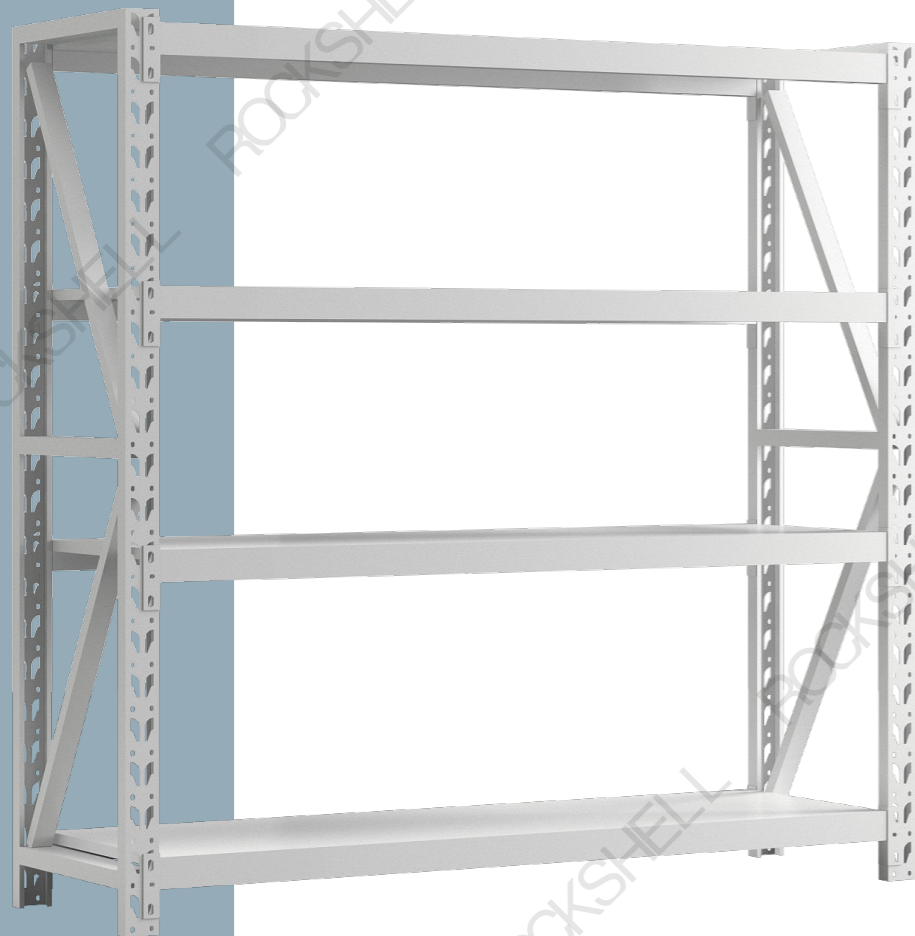
Thickened column



Backside reinforcement



Reinforced welding technique



**STORAGE
EXPERT**

Heavy duty shelf HJ-001
Specifications: W2000*D500*H2000



Heavy duty shelf HJ-002
Specifications: W2000*D500*H2000



Heavy duty shelf HJ-003
Specifications: W2500*D1000/1200*H3000



Parts box hook series

